

Drawing PLANTS

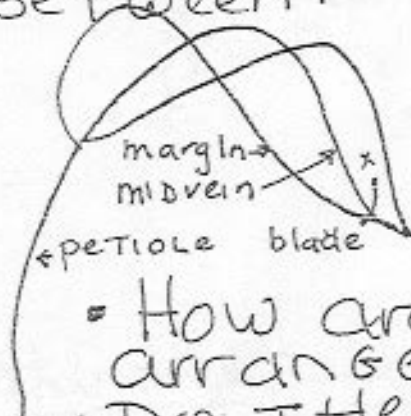
- Stems
- Flower Placement & Form
- Leaves Placement & Form

Seeing is the Key

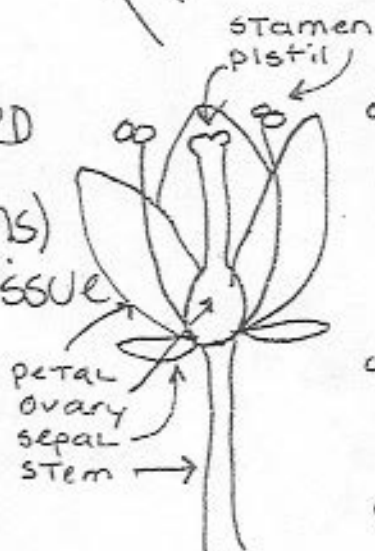
Draw a SPECIFIC PLANT - NOT a Generalized Version.

Leaf -

- 3 Lines attached AT BOTH ENDS (MIDVEIN + MARGINS) WITH BLADE TISSUE BETWEEN.



- How are Leaves arranged?
- Do they have petioles, or are they sessile?



Flower -

- Locate STAMENS, PISTIL, OVARY, PERIANTH (PETALS, SEPALS)
- ATTACHMENT TO THE STEM
- WHERE WILL FRUIT DEVELOP?